



Improvised Explosive Device (IED) Recognition Course

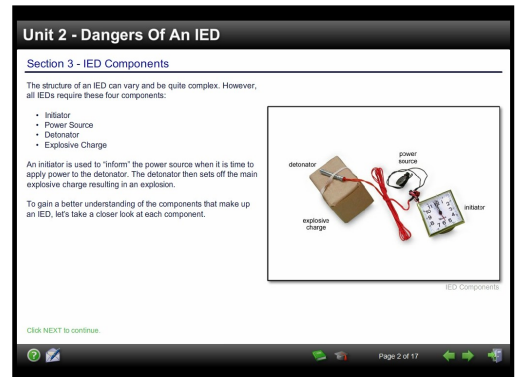
The Improvised Explosive Device (IED) Recognition Course teaches the student how to identify explosives and explosive devices using X-ray technology. World-wide terrorist activities have increased dramatically. One of the terrorists' weapon of choice is the IED. Detecting IEDs is a critical part of any security screener's responsibility. Training is the most important element in effective detection of the IEDs. This training course provides essential instruction on basic IED components, interactive exercises and tests where the student must identify IEDs using X-ray technology.

Key Features

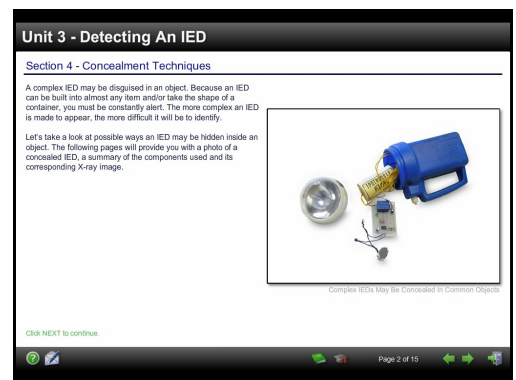
- Advanced instruction of IED components
- Practical exercises require the student to identify the main components of an IED in X-ray images
- Identification of common timers, initiators, and power sources
- Identification of low and high explosives used in IEDs
- Identification of IEDs

Key Benefits

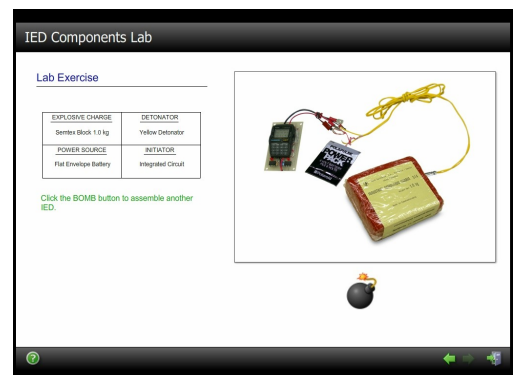
- Standardized - Each student interacts with the same training content and must achieve the same minimum passing grades. This ensures each student is trained to the same standard and is prepared to carry out his responsibilities.
- Practical - Safe and effective way for the student to practice identifying IEDs using X-ray technology.
- Comprehensive - The training teaches identification of explosives, components, and IEDs. This comprehensive approach prepares the student to detect the widest variety of IEDs.
- Self-paced - Each student can work through the training at his own pace. Custom remedial instruction is used to provide the right amount of training at the right time.



Course Screen



Course Screen



Lab Exercise Screen



Improvised Explosive Device (IED) Recognition Course

Course Topics

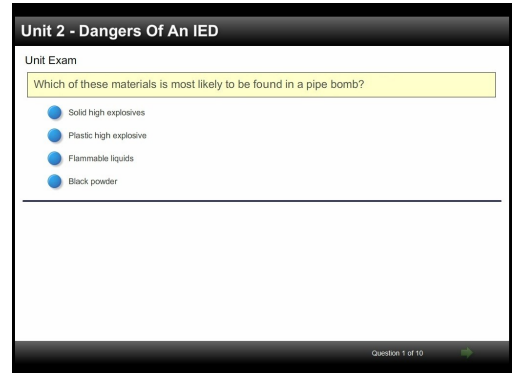
Introduction to Explosives - Teaches the characteristics and destructive nature of high and low explosives. The student will learn about historical events that demonstrate the need for IED detection.

Component of an Improvised Explosive Device (IED) - Teaches the student about the four components of any explosive device, what the components look like, and how IEDs are created.

X-ray Recognition of IEDs - Provides the student with an opportunity to examine X-ray images of IEDs. The student must then identify the various components.

Physical Detection of IEDs - Teaches the student about how to perform a full bag search to detect an IED. Each student will learn how to use their senses to detect explosives.

IED Concealment Techniques - Teaches common concealment techniques for IEDs. The student must demonstrate appropriate methods for identifying concealed components.



Unit Exam

Courseware Specifications

Applications:

Initial, Recurrent

Delivery Options:

CBT, ILT, WBT

Estimated Seat Time:

Operator Course: 2-3 Hours

Languages:

Arabic, English, Portuguese, Russian

Security Training Solutions For Today's World

www.safe-passage.com

info@safe-passage.com

Corporate Headquarters
333 Metro Park
Rochester, New York 14623
UNITED STATES
Tel: +1 585 292 4910
Fax: +1 585 292 4911

ATS - Aviation Training & Services
Luiz Faccini, 416 - 2º floor -
Guarulhos - SP - Brazil
07110-000
Tel: +55 11 2229-8938
Cel: +55 11 96631-6965

